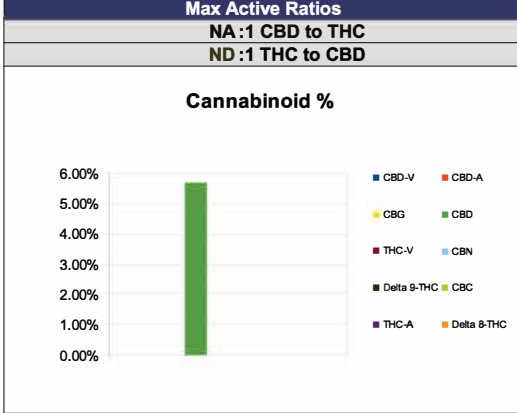
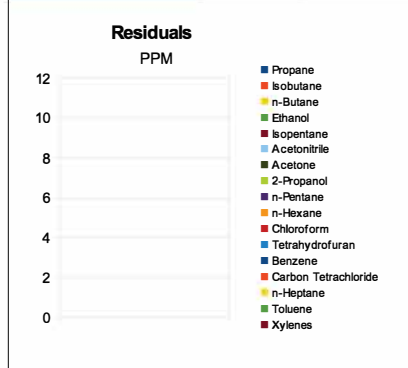


Sample Information		
Sample Identification	<b>NS HP 25mg Capsules (A)</b>	
Laboratory Number	<b>2019000653</b>	
Batch Number	<b>N/A</b>	
Matrix	<b>Capsule</b>	
Analyzed Date	01/10/19	
Extraction Date	01/10/19	
Cannabinoid (HPLC)	%	mg/g
Compound		
CBD-V	ND	ND
CBD-A	ND	ND
CBG	ND	ND
CBD	5.68%	56.80
THC-V	ND	ND
CBN	ND	ND
Delta 9-THC	ND	ND
CBC	ND	ND
THC-A	ND	ND
Delta 8-THC	ND	ND
Cannabinoids Total		
Max Active THC	<b>ND</b>	<b>ND</b>
Max Active CBD	<b>5.68%</b>	<b>56.80</b>
T. Active Cannabinoids	<b>5.68%</b>	<b>56.80</b>
Total Cannabinoids	<b>5.68%</b>	<b>56.80</b>



RS (GCMS-HS)	PPM	RL
Compound		
Propane	NT	5.0
Isobutane	NT	5.0
n-Butane	NT	5.0
Ethanol	NT	5.0
Isopentane	NT	5.0
Acetonitrile	NT	5.0
Acetone	NT	50.0
2-Propanol	NT	5.0
n-Pentane	NT	5.0
n-Hexane	NT	5.0
Chloroform	NT	5.0
Tetrahydrofuran	NT	5.0
Benzene	NT	5.0
Carbon Tetrachloride	NT	5.0
n-Heptane	NT	5.0
Toluene	NT	5.0
Xylenes	NT	10.0

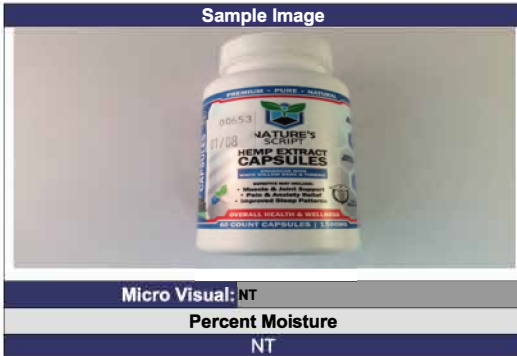
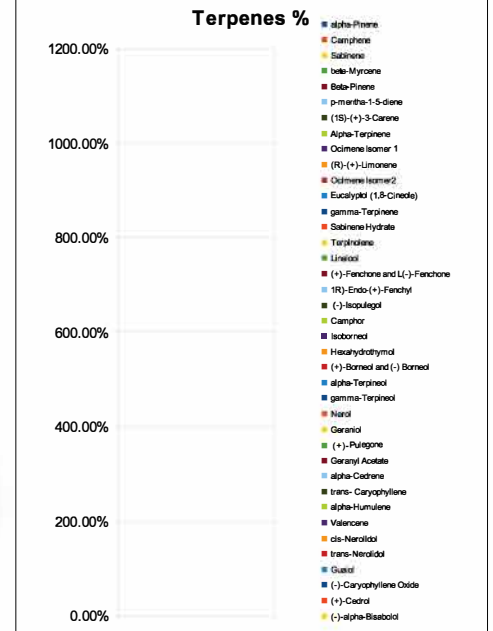


<b>g/capsule</b>	<b>0.47</b>
<b>mg THC/capsule</b>	<b>ND</b>
<b>mg CBD/capsule</b>	<b>26.94</b>
<b>(mg) total cannabinoids/capsule</b>	<b>26.94</b>

Metals	PPM	RL
Compound		
Lead	NT	0.010
Arsenic	NT	0.010
Cadmium	NT	0.010
Mercury	NT	0.001

**RL=Reporting Limit**  
**NA=Not Applicable**  
**NT=Not Tested**  
**ND=Non Detected**

Terpene (GC-MS)	%	mg/g
Compound		
alpha-Pinene	NT	NT
Camphene	NT	NT
Sabinene	NT	NT
beta-Myrcene	NT	NT
Beta-Pinene	NT	NT
p-mentha-1-5-diene	NT	NT
(1S)-(+)-3-Carene	NT	NT
Alpha-Terpinene	NT	NT
Ocimene Isomer 1	NT	NT
(R)-(+)-Limonene	NT	NT
Ocimene Isomer2	NT	NT
Eucalyptol (1,8-Cineole)	NT	NT
gamma-Terpinene	NT	NT
Sabinene Hydrate	NT	NT
Terpinolene	NT	NT
Linalool	NT	NT
(+)-Fenchone and L(-)-Fenchone	NT	NT
1R)-Endo-(+)-Fenchyl	NT	NT
(-)-Isopulegol	NT	NT
Camphor	NT	NT
Isoborneol	NT	NT
Hexahydrothymol	NT	NT
(+)-Borneol and (-) Borneol	NT	NT
alpha-Terpineol	NT	NT
gamma-Terpineol	NT	NT
Nerol	NT	NT
Geraniol	NT	NT
(+)-Pulegone	NT	NT
Geranyl Acetate	NT	NT
alpha-Cedrene	NT	NT
trans- Caryophyllene	NT	NT
alpha-Humulene	NT	NT
Valencene	NT	NT
cis-Nerolidol	NT	NT
trans-Nerolidol	NT	NT
Guaiol	NT	NT
(-)-Caryophyllene Oxide	NT	NT
(+)-Cedrol	NT	NT
(-)-alpha-Bisabolol	NT	NT
<b>Total Terpenes</b>	<b>NT</b>	<b>NT</b>



**Chemist: JG**

